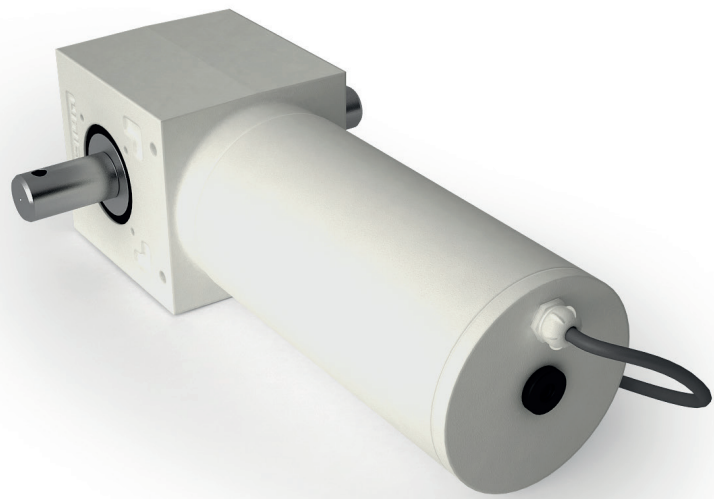



Submerged DL series

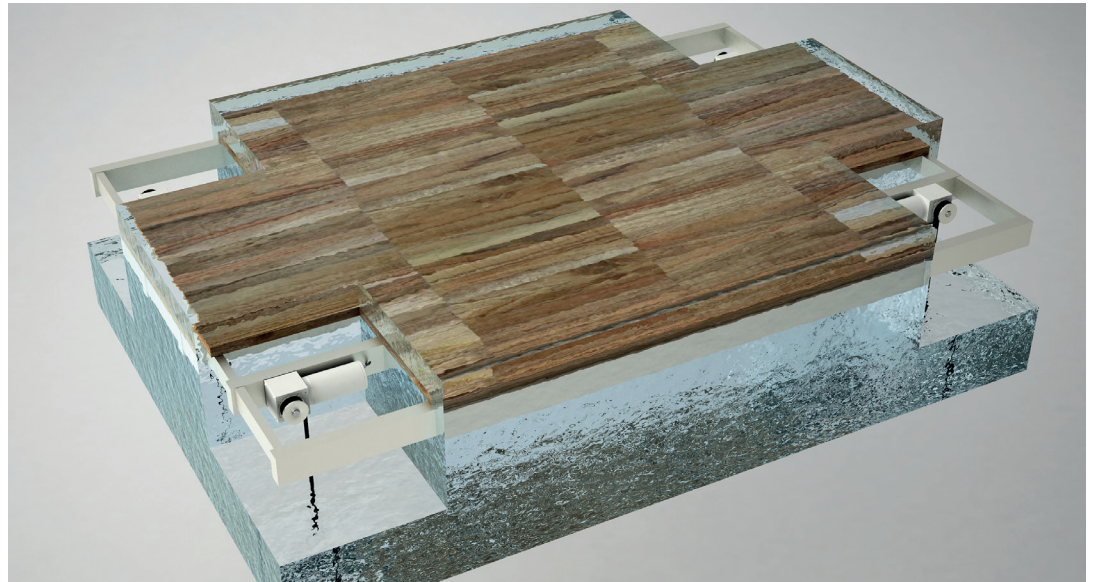


Features & Benefits

- 100% waterproof Aluminum + PVC housing (internal pressure 1.8 bar N₂)
- Output shaft made of 316L stainless steel
- IP68 watertight for underwater operation 
- Static holding brake for maintaining the cover in position when stopped - CPS patent
- Mechanical limit switches, insensitive to parasitic currents - MLS patent
- Standard cable 1.5 m

Power Supply

- Automatic control panel, with limit switch setting and auxiliary contact management (e.g. for electrolyzer control)
- 220 V AC mains - 24V or 12V low voltages supply. IP55 tightness

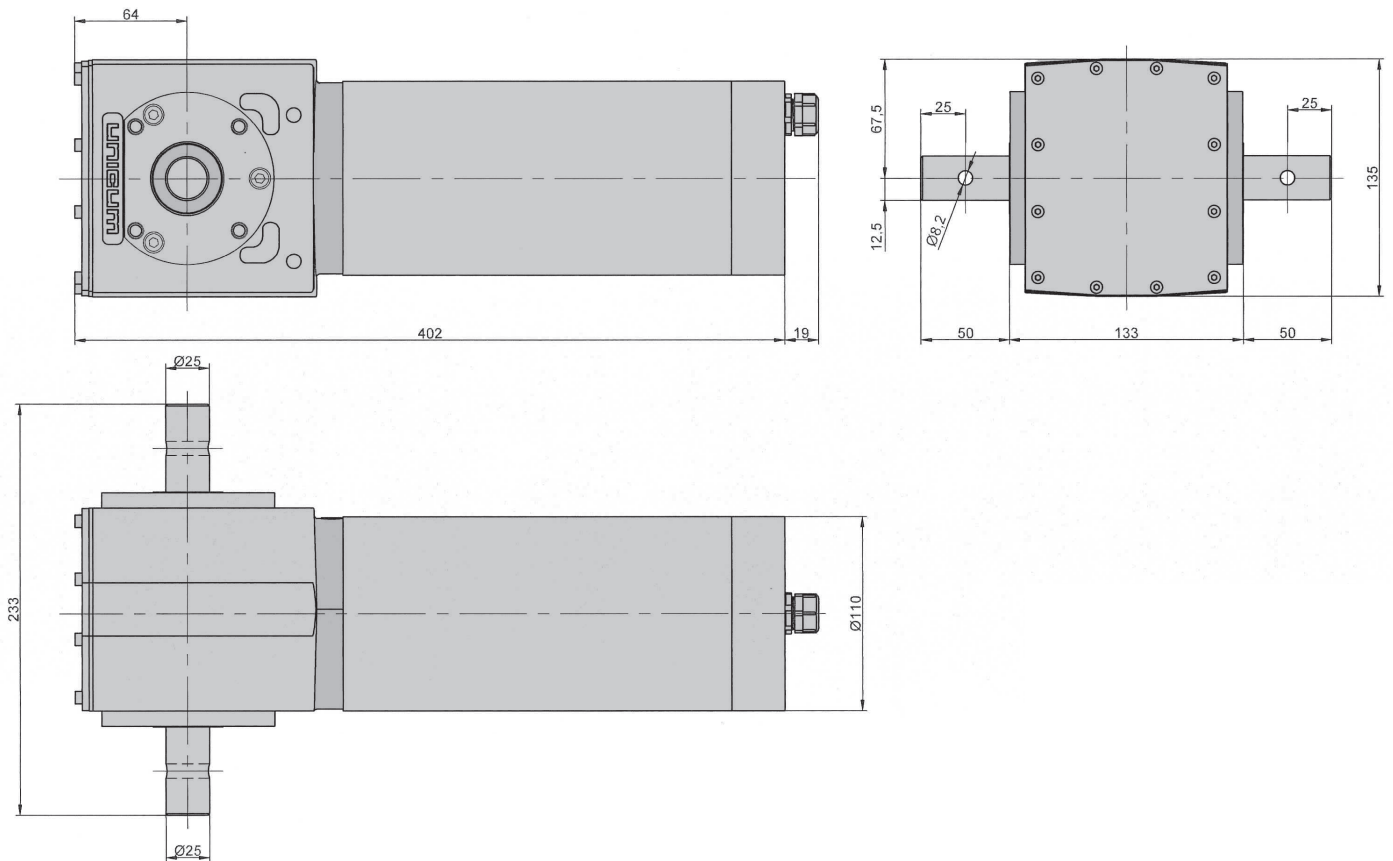


Patents & Features



CUBIC
SOLID
SHAFT
IP68

Dimensional drawing



Technical data

		DL3010	DL6010
Output torque	Nm	250	500
Rotation speed (under load)	Rpm	4	4
Rated current	A	10	13
Supply voltage	V DC	24	24
Power supply Réf.	AN1030	●	
	AN1040		●
Nominal supply current	A	10	15
Waterproofing: IP68 during operation	-	●	●
Mechanical Limit Switch	MLS	●	●
Constant Positioning System	CPS	●	●