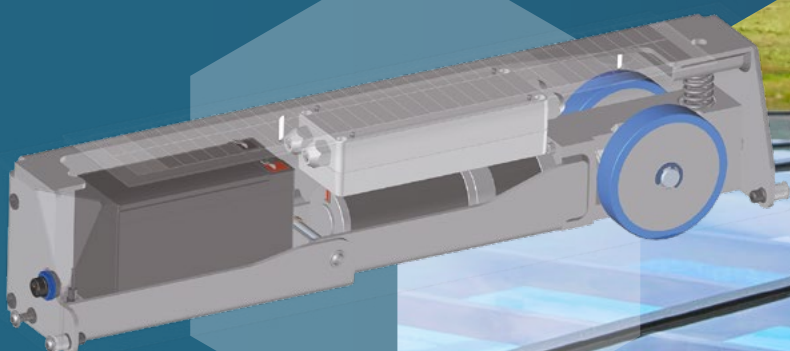


abrilMot +SD

FOR TELESCOPIC ENCLOSURE
AND POOL DECKS

The “all-in-one” drive system
100% adaptable and
multi-configuration

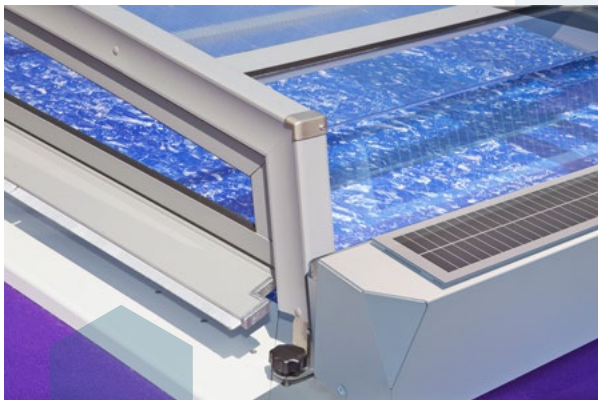


Easy
to install
and use

A rugged construction fully equipped

Abrimot SD is the most compact and technological “all-in-one” drive system for telescopic pool enclosure and pool decks.

- With its **reduced size** (620 x 148.5 x 110 mm) and its **modern design** it **integrates very easily** with most of existing pool covers.
- Due to its **light weight** (13kg only) **installation is quick and comfortable**.



BATTERY

ABRIMOT SD includes a powerful and highly efficient planetary motor gearbox powered by a common 12V lead acid battery. The battery is reloaded by an integrated 6W solar panel and an external charger IP68 plug is also available in case of long periods without sun.

CONTROL

A dedicated electronic control board is the active “brain” of the system, allowing the user to easily program, use and maintain the whole system.

MATERIALS

Materials have been chosen in order to resist to harsh environment thus offering a long lasting lifespan. The housing and the frame are 100% aluminium made. Standard color is RAL 7016 but other colors are available as an option. The driving wheels, also in aluminium, are covered with a special polyurethane mix which is resistant to chlorine.

ELECTRONIC

The electronic board is contained in an IP55 box and all electrical connections are done using IP68 automotive quick plugs in order to ease eventual maintenance.



Fitting
any
configuration



Let's drive your success!

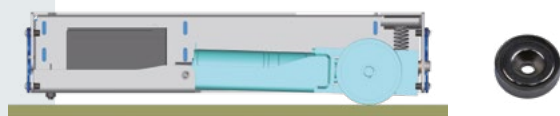
Easy to install

With its compact dimensions and light weight, ABRIMOT SD installation is **quick and easy**. A lot of pre-drilled fixing holes are available on the frame.

An optional adaptation plate is available if the motor have to be fixed on a surface having between 0° and 45° of inclination.



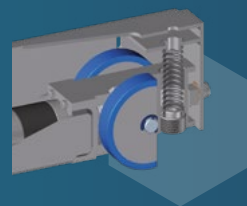
- ABRIMOT SD is equipped of a **magnetic sensor which allows the automatic detection of limit switches**. The only installation steps required to use this important and useful feature, are setting the proper distance between the sensor and the ground and the installation of two magnets in the most convenient position to avoid that cover hits the end of the rails.



Fitting any customer need and configuration

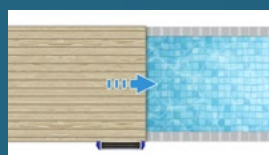
One ABRIMOT SD unit can move **covers from 500 to 800 kg** depending on soil type. Linear speed is limited to 4 m/min for security reason.

- The driving block (motor gearbox + wheel) can be easily preloaded against the ground through a spring in order to allow ABRIMOT SD to adapt to different kind of surfaces and cover sizes. This system allows also to absorb irregularities and obstacles on uneven surfaces.

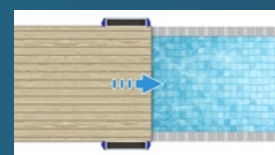


- The most important component allowing ABRIMOT SD to adapt to almost any kind of pool enclosures or deck is the electronic board. This piece of technology includes the possibility of connecting two ABRIMOT SD via wire in Master-Slave schema. Another feature allows wireless synchronization of two units.

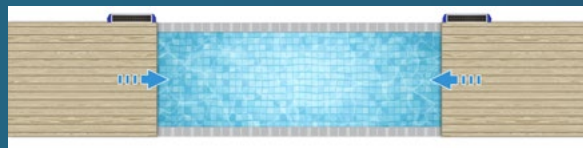
This means that ABRIMOT SD can support configurations with 1 or 2 or 4 motors:



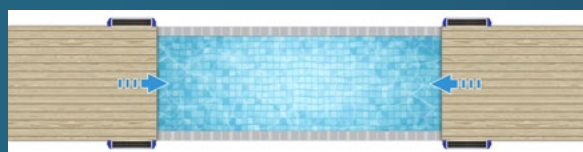
Standalone



Master slave



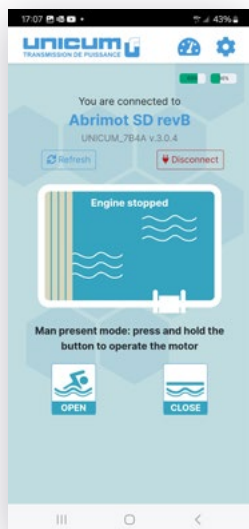
2 synchronized systems



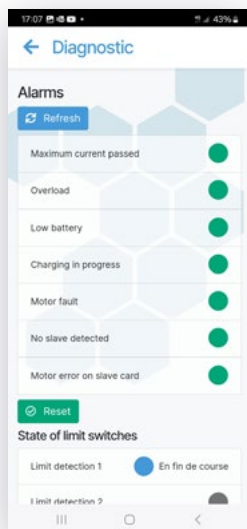
2 synchronized Master slave pairs

Easy to use

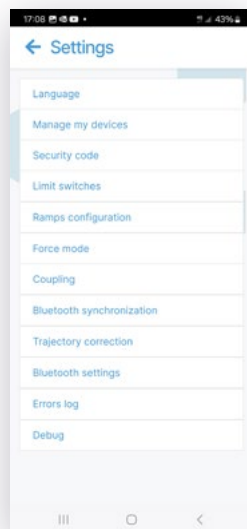
ABRIMOT SD is **very easy to program and to use** thanks to its **Bluetooth** communication protocol and the **free App "Uni Pool Easy Control"** which can be downloaded from Play Store (Android) or App Store (iOS). The application is available in **12 languages** and offers a large number of functions and diagnostic alarms to have full access to ABRIMOT SD features.



Main page



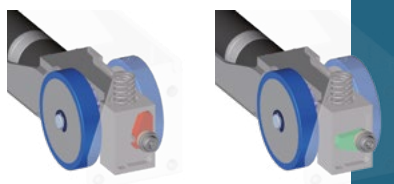
Alarm page



Settings page

Hardware and software in the controller board are designed in order to minimize battery consumption. Bluetooth power can be programmed and customized in order to compel the user to stay close to the cover and survey its movements carefully.

In case that a Bluetooth device is unavailable, ABRIMOT SD controller is equipped with a three positions button **which allows the user to activate the motor manually**. Even in case the system is completely unavailable and not working, the user has a very easy release system to lift the wheels from the ground allowing the user to push the cover by hand freely.



The offer is competed by optional devices like a remote control and an external battery charger which improve even more the experience of your ABRIMOT SD drive system.

UNICUM MOTORS FOR ALL YOUR APPLICATIONS



UNICUM
PUISSANCE | EXIGEANCE | PERFORMANCE

Gearmotors builder for
swimming pool cover since 30 years

+33 4 77 33 36 96
contact@unicum.tech

ZAC de Montrambert-Pigeot
42150 La Ricamarie - FRANCE



unicum.tech