

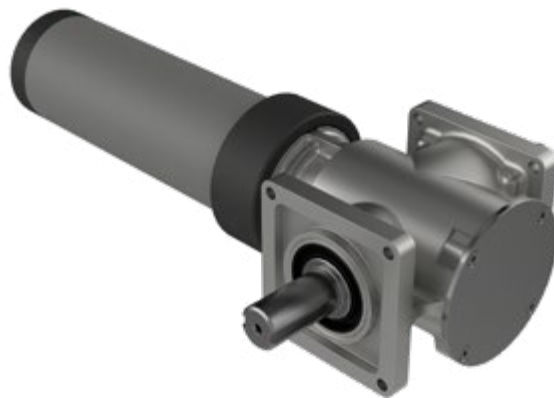
CUBIC
SOLID
SHAFT
IP68

APPLICATIONS

MOVABLE
FLOOR



Submerged DL series



Features & Benefits

- 100% waterproof stainless steel + PVC housing (internal pressure 1.8 bar N2)
- Output shaft made of 316L stainless steel
- IP68 watertight for underwater operation
- Electromagnetic holding brake to maintain the cover in position when stopped
- Mechanical limit switches, insensitive to overtension - MLS patent
- Inductive or Hall position sensor available on demand

Power Supply

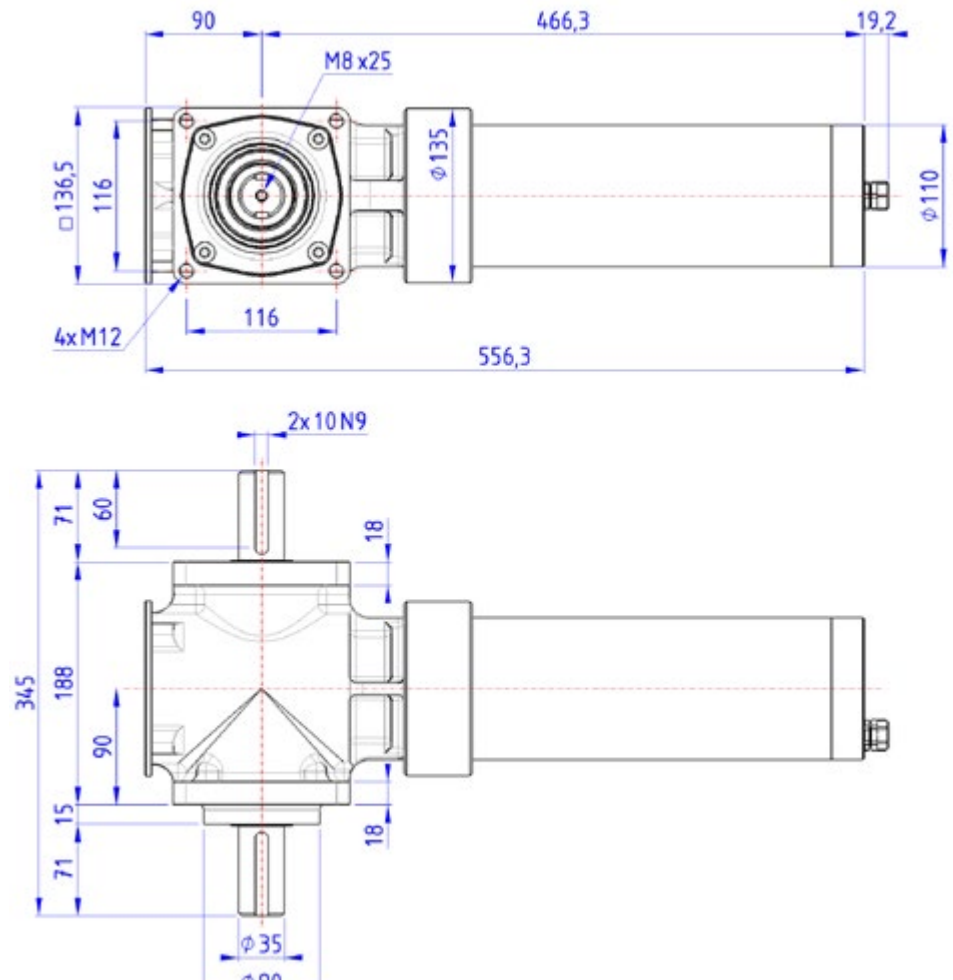
- Automatic control panel, with limit switch setting and other enhanced functions for cover management: UNIBox controllers (see specific page)
- Conversion from 230V AC to 24V DC - CE, UKCA and UL certification
- All motorgearbox technical data must be intended as valid only when the motor is powered with the recommended UNIBox controller



Patents & Features



Dimensional drawing



Technical data

		Submerged DL
Output torque	<i>Nm</i>	900
Rotation speed (under load)	<i>Rpm</i>	2
Rated current	<i>A</i>	15
Supply voltage	<i>V DC</i>	24
Power supply Ref.	<i>UNIBox 450</i>	●
Waterproofing: IP68 during operation	-	●
Mechanical Limit Switch	<i>MLS</i>	●