



unicum 

PUISSANCE | EXIGEANCE | PERFORMANCE

**GEARMOTORS
FOR SWIMMING POOL COVERS**

www.unicum.tech

Our company

Established in 1927, UNICUM has always worked on mechanical power transmission components.

After the Second World War, a patented mechanical speed variator fostered our development. Today that success has given way to new products that witness our adaptation capabilities to technological evolution and our will to support our customers in their growth.

Located in La Ricamarie (Loire, France), our production facility is equipped with modern machine tools and a considerable stock of finished products which guarantees our reactivity and service level for our French and international customers.



Our activities

unicum
MOTOREDUCTEURS PISCINES

The **Swimming pool gearmotors division** is a European leader in the production of drives for swimming pool covers. Our product range includes several sizes, either low voltage or solar powered, IP55 or IP68, for above ground rollers or submerged rollers or for a dry pit installation. These motors are designed to adapt to any kind of mounting.

unicum
REDUCTEURS SUR-MESURE

The **Tailored gearboxes division** offers a deep expertise in different domains and applications and allows the quick development of a specific solution. Using our co-development method, UNICUM is able to effectively answer customer demands and give a quick feedback on project feasibility.

unicum
COMPOSANTS INDUSTRIELS

The **Industrial Components division** proposes a large range of standard components for power transmission, including industrial brakes and clutches, reducers, jacks, couplings, linear and rotary drives solutions.

Our strategy is based on innovation



UNICUM started to produce motors for swimming pool covers in the 90's, at a time when the market was in its early stage.

Its consolidated knowledge of power transmission components allows UNICUM to deeply understand customers' needs. The company thus quickly became the market leader in this niche.

Heavy investments in research and development, together with company know-how and experience, led to the conception of several patented solutions answering and sometimes even anticipating customers' expectations. The production capacity has also been continuously improved, both in terms of volume and quality.

If UNICUM is still a market leader today, it is a direct consequence of the strategy that has been preserved and developed since the origins: technical innovation, high service standards and an extensive production quality control.

UNICUM technology and patents



Constant Positioning System (Brevet CPS)

It assures that the cover is correctly held in its position when the motor is stopped and not powered. This security function is obtained by using a smart permanent magnetic brake, replacing the traditional electromagnetic brake which is often source of failures when stuck.

Mechanical Limit Switch (Brevet MLS)

It's the final solution against problems related to limit switches. A mechanical coding device replaces electronic sensors which, as a matter of fact, are very sensitive to electrical and magnetic perturbations such as those typically present during thunderstorms.

Power supply electronic control boxes conceived for easy installation

Our range of electronic control boxes offer a reliable and stable AC/DC power conversion together with motor control. They are designed to ease their installation even though a complete set of advanced features is available on the board.



UNICUM gearmotors

The widest range in the market

UNICUM's portfolio has been developed by focusing on customer needs and with a particular attention to the integration of our products inside our customers' systems.

Today UNICUM offers the widest range of gearmotors on the market. Motor power and available options fit most of our customers' requirements, both for most diverse private swimming pools and also for more demanding public or municipal swimming pools.

Tailor-made as standard

UNICUM has an industrial plant and a supply chain which are specially adapted to fit the wide variety of customization needs expressed by swimming pool cover manufacturers (e.g. offering special flanges and shafts).

Thanks to this performant organization, UNICUM can offer a tailored gear motor entirely adapted to the customer's installation and based on standard delivery times and prices, no matter the pool configuration and size or the cover installation type.



Our guaranteed quality



Waterproofed in any condition

In the submerged version, UNICUM guarantees a perfect IP68 water tightness (and in the very long term) by a controlled overpressure of the motor housings.

100% Fully Tested

UNICUM has developed and fine-tuned a sophisticated test bench that qualifies and guarantees 100% of our production by measuring the key technical characteristics on each motor.

This is the UNICUM 100% quality control guarantee.

Smartphone App

Certification test reports are available for our customers at any time and in any place via a dedicated UNICUM mobile application.



IPHONE & ANDROID
COMPATIBLE



Shafts & Flanges on request

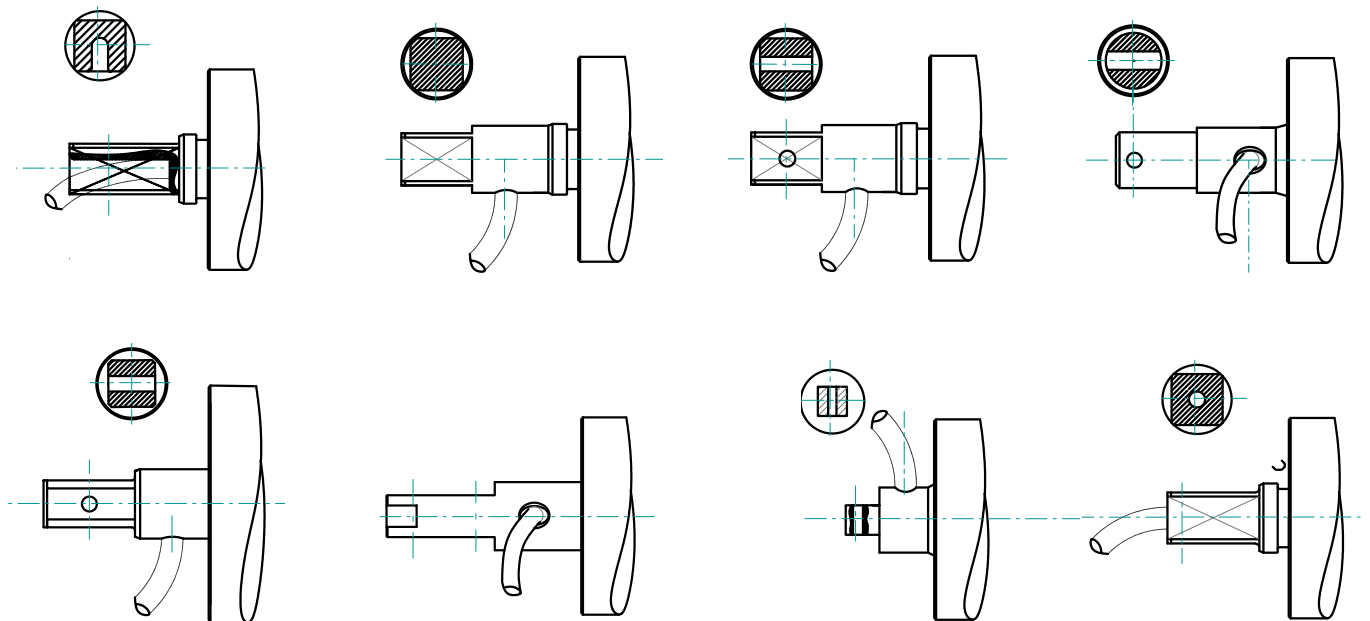
In a demanding market driven by integrators' constraints and end-users' wishes, UNICUM has always chosen to adapt as closely as possible to the technical needs of both parties.

UNICUM's workshops, machines and teams are specially organized to meet the most varied customization options, particularly on flanges and shafts.

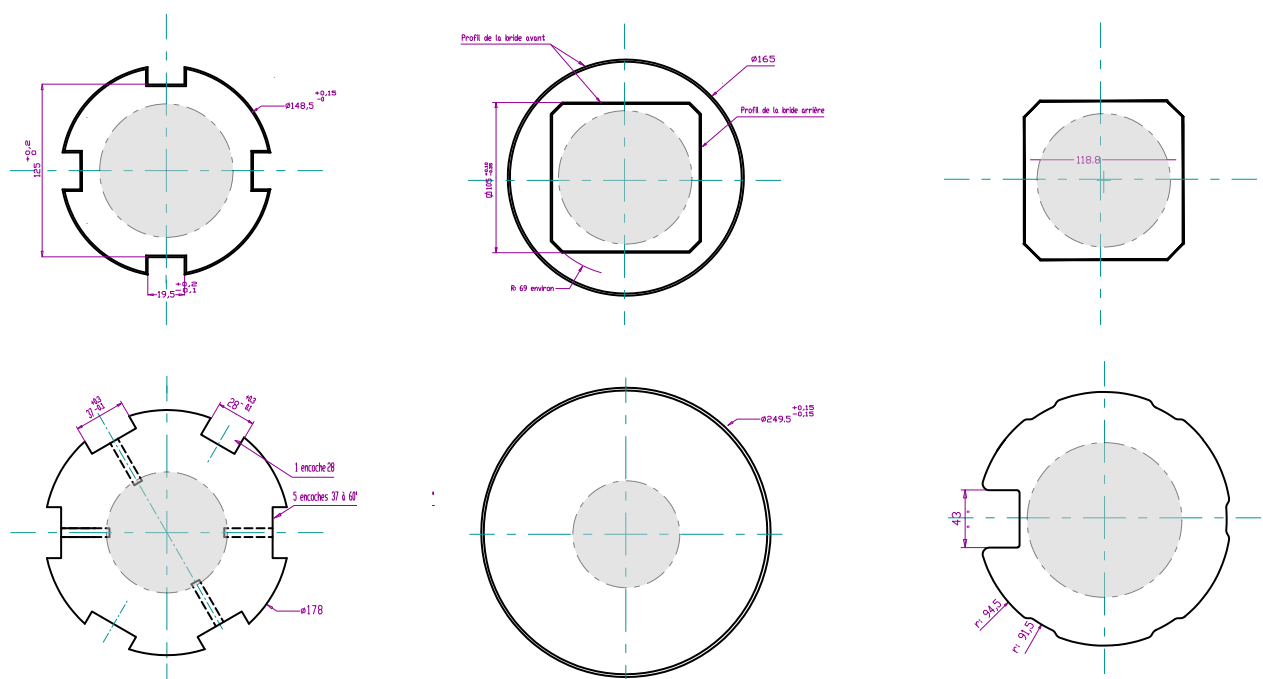
Thanks to its flexible industrial organization, UNICUM adapts to a wide variety of integrators' demands, always guaranteeing standard delivery times and reasonable prices.

This customization capacity allows any integrator to easily replace obsolete motors or other vendors' drives.

Examples of custom shafts



Examples of custom flanges



Selection table

Type

ABOVE GROUND

Tubular IP55	UNIMOT
Tubular IP55	UNIMOT ELEC
Cubic hollow shaft IP68	DL

SUSPENDED

Tubular IP68 8rpm	PL
Tubular IP55	UNIMOT
Cubic hollow shaft IP68 	DL

PIT MOUNTING

Cubic hollow shaft IP68 	DL
Cubic hollow shaft IP68 8rpm	DL

SUBMERGED

Tubular IP68	PL
Tubular IP68 8Tr/mn	PL

MOVABLE POOL FLOOR

Tubular IP68	PL
Cubic solid shaft IP68	DL

SLIDING DECK

Tubular double-sided IP55	ABRIMOT
Cubic hollow shaft IP68 	DL

TELESCOPIC ENCLOSURE

Tubular double-sided IP55	ABRIMOT
---------------------------	---------

ELECTRONIC CONTROLLERS

Controllers for UNIMot
UNIBox series

DOMOTICS

Receiver
Remote controle / Smartphone adapter

(1) Maximum current to deliver the reference torque

All data are indicative and not legally binding. UNICUM reserves the right to modify its products at any time.

TUBULAR SUBMERGED IP68

PL Series



Features & Benefits

- 100% waterproof PVC housing (1.8 bar N2 internal pressure)
- Fixed shaft made of 316L stainless steel customized according to customer drawing
- Front and back flanges customized on customer tube dimensions
- IP68 watertight for underwater operation (LNE L031725 certification)
- Static holding brake to maintain the cover in position when stopped - CPS patent
- Mechanical limit switches, insensitive to parasitic currents - MLS patent
- Standard cable 1.5 m

Power Supply

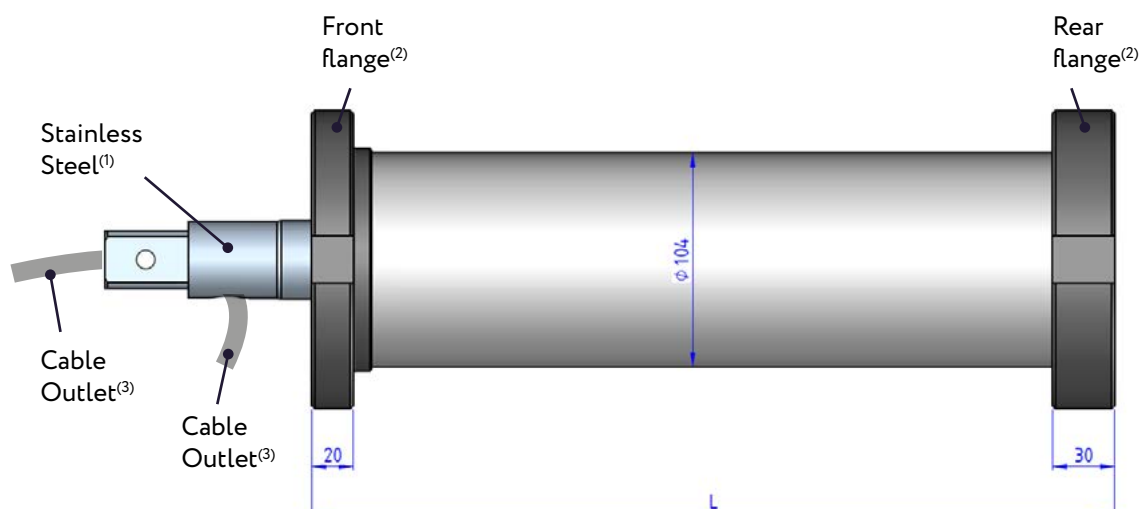
- Automatic control panel, with limit switch setting and other enhanced functions for cover management: UNIBox controllers (see specific page)
- Conversion from 230V AC to 24V DC - CE, UKCA and UL certification
- All motorgearbox technical data must be intended as valid only when the motor is powered with the recommended UNIBox controller



Patents & Features



Dimensional drawing



(1) and (2) : 100% customizable interface.
See page 5 for details

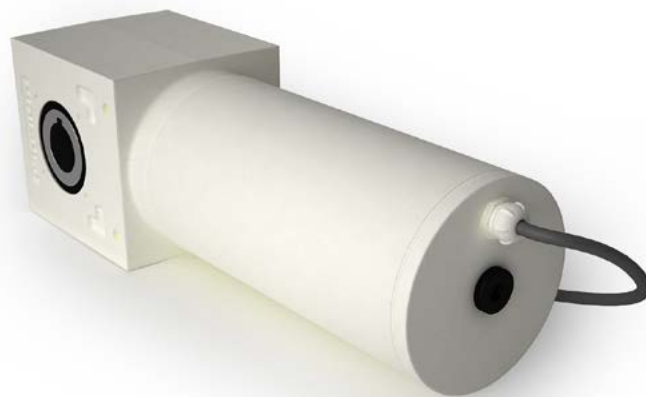
(3) : Axial or radial outlet

Model	L
PL6010	388
PL7710	Contact the sales department
All other sizes	355

Technical data

		PL1210	PL2010	PL3210	PL6010	PL7710
Drive torque	Nm	120	170	250	500	900
Rotation speed	Rpm	4	4	4	3	2
Current	A	4	5	9	13	15
Supply voltage	V DC	24	24	24	24	24
Power supply Ref.	UNIBox 120	●	●			
	UNIBox 250		●	●		
	UNIBox 450				●	●
Waterproofing: IP55 during operation	-	●	●	●	●	●
Mechanical Limit Switch	MLS	●	●	●	●	●
Constant Positioning System	CPS	●	●	●	●	

DL Series



Features & Benefits

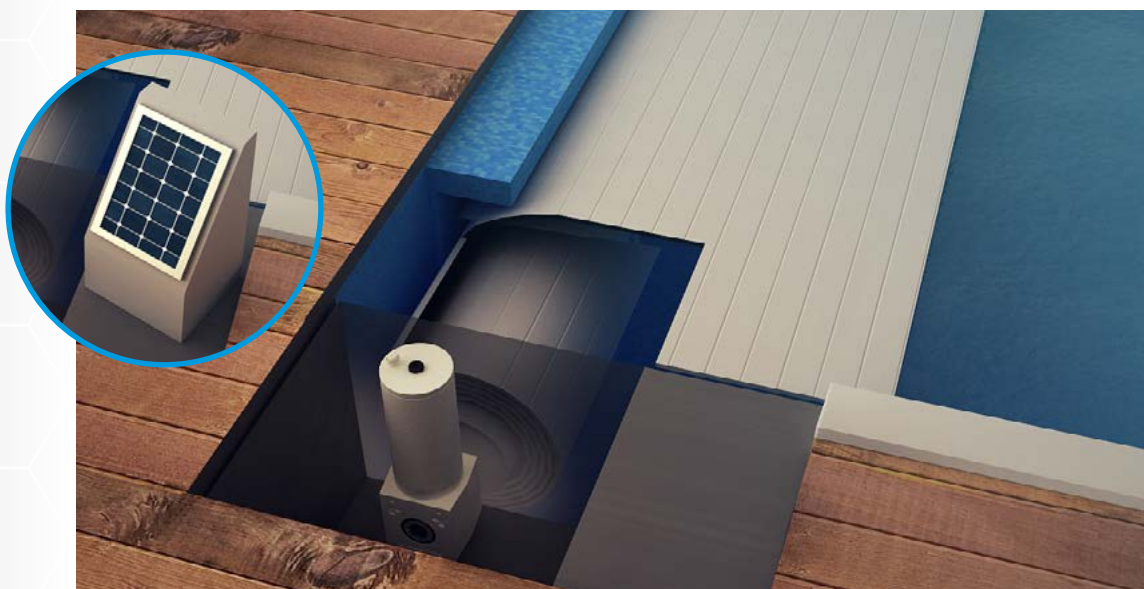
- IP68 motor gearboxes designed for occasional immersion
- Aluminum and PVC housing
- Static holding brake to maintain the cover in position when stopped - CPS patent
- Mechanical limit switches, insensitive to parasitic currents - MLS patent
- 316L stainless steel shaft with hollow shaft fixings
- Screw for emergency drive with battery screwdriver in case of power failure
- 1.5 m power cable as standard



Power Supply

- Automatic control panel, with limit switch setting and other enhanced functions for cover management: UNIBox controllers (see specific page)
- Conversion from 230V AC to 24V DC - CE, UKCA and UL certification
- All motorgearbox technical data must be intended as valid only when the motor is powered with the recommended UNIBox controller

CUBIC
HOLLOW
SHAFT



Patents & Features



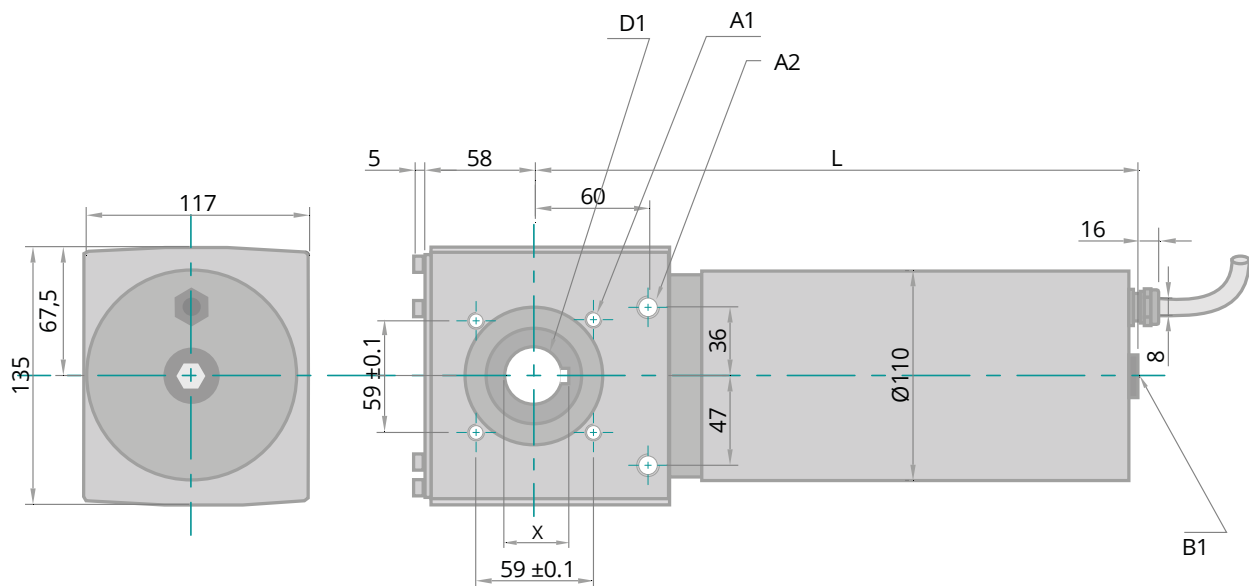
Dimensional drawing

D1 Ø30.1 for DL1310 and DL3010 + keyway width 8.1
 Ø30.1 for DL6010 + keyway width 8.1
 Ø40.1 with option for DL6010 + keyway width 12.1
 Ø30.1 for DL7710 + keyway width 8.1
 Ø40.1 with option for DL7710 + keyway width 12.1

A1 On each side: 4 threaded holes M8 depth 15

A2 On each side: 2 threaded holes M10 deep 1

L DL 1310 : L = 293 DL 3010 : L = 303
 DL 6010 : L=369,5 DL 7710 : L= 414,5



X 33.3 for DL1310 and DL3010
 33.3 for DL6010 and DL7710 Ø30.1
 42.2 for DL6010 and DL7710 option Ø40.1

B1 Screw cap for emergency drive by battery drill
 - H M4 (7/flat key) for DL1310
 - H M5 (8/flat key) for DL3010, DL6010, DL7710

Technical data

		DL1310	DL3010	DL6010	DL7710
Output torque	Nm	120	250	500	900
Rotation speed	Rpm	4	4	3	2
Current	A	5	9	13	15
Supply voltage	V DC	24	24	24	24
Power supply Ref.	UNIBox 120	●			
	UNIBox 250		●		
	UNIBox 450			●	●
Waterproofing: IP55 during operation	-	●	●	●	●
Watertight: IP68 when stationary	-	●	●	●	●
Mechanical Limit Switch	MLS	●	●	●	●
Constant Positioning System	CPS	●	●	●	●
Emergency drive	-	●	●		

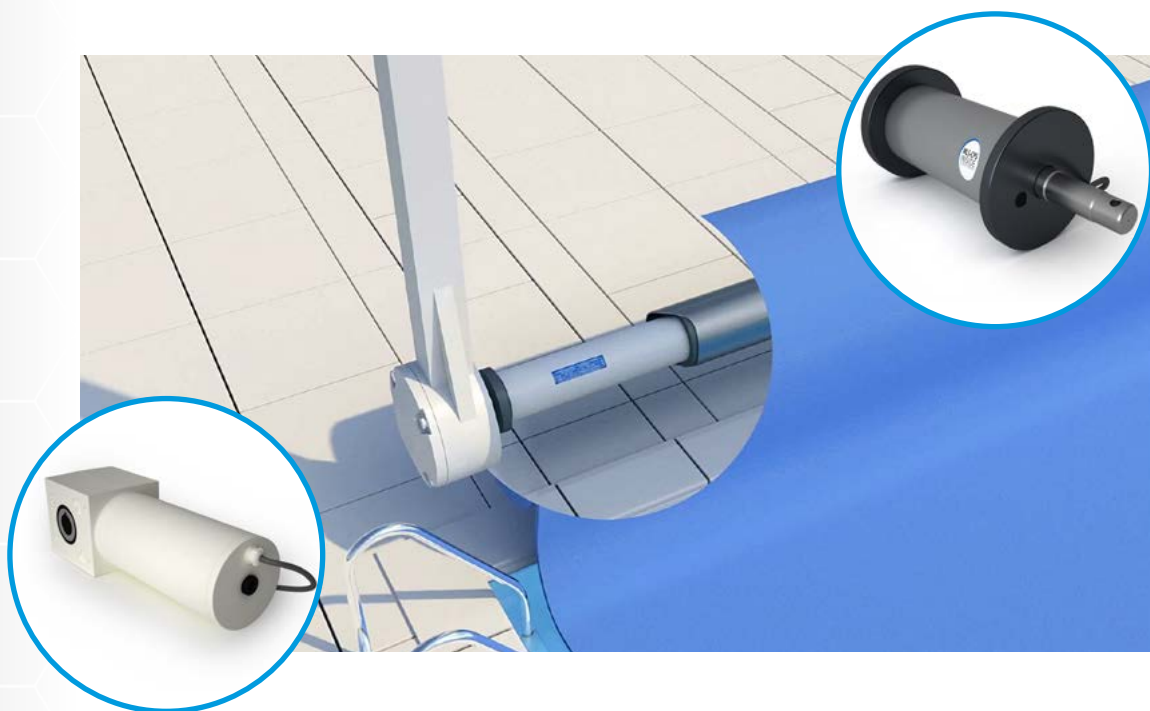
Fast motors (8rpm)

Features and advantages

- 8rpm motors
- PL and DL series motors suitable for hanging covers
- IP68 sealing
- Static holding brake to maintain the cover in position when stopped - CPS patent
- Mechanical limit switches, insensitive to overtension - MLS patent
- Standard 1.5m cable
- Ideal application for thermal and plastic covers
- Also usable for slatted covers thanks to adjustable closing speed

Power supply

- Automatic control panel, with limit switch setting and other enhanced functions for cover management: UNIBox controllers (see specific page)
- Conversion from 230V AC to 24V DC - CE, UKCA and UL certification
- All motorgearbox technical data must be intended as valid only when the motor is powered with the recommended UNIBox controller



Patents and features



Technical details

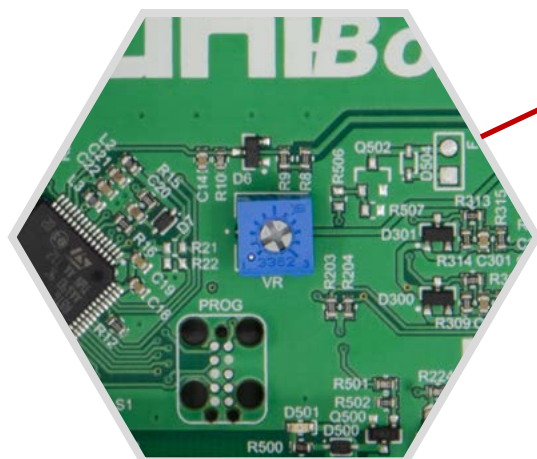
		PL1218	PL2018	PL3218	PL605		DL1318	DL3018	DL605
Drive torque	<i>Nm</i>	120	170	230	320		120	230	320
Rotation speed	<i>Rpm</i>	8	8	8	5		8	8	5
Current	<i>A</i>	7.5	12	15	14		7.5	15	14
Supply voltage	<i>V DC</i>	24	24	24	24		24	24	24
Power supply Ref.	<i>UNIBox 120</i>								
	<i>UNIBox 250</i>	●					●		
	<i>UNIBox 450</i>		●	●	●			●	●
Waterproofing: IP55 during operation	-	●	●	●	●		●	●	●
Mechanical Limit Switch	<i>MLS</i>	●	●	●	●		●	●	●
Constant Positioning System	<i>CPS</i>	●	●	●	●		●	●	●
Emergency disengagement	-	(1)	(1)	(1)	(1)		●	●	●

(1) by shaft

Speed control on slatted covers

High-speed motors can also be used for slatted covers, thanks to our new UNIBox technology, which allows the speed to be adjusted during closing phase only, in order to protect the cover from possible damage during closing phase.

- Precise closing speed adjustment thanks to a potentiometer located on the board



- More information on page 14 and in the product's user manual



Overview

UNIBox is the result of years of experience and know-how in the pool cover motor control.

These control boxes are carefully designed to be able to correspond to each pool's needs, according to UNICUM's custom-made philosophy, while remaining very intuitive and easy to use.

One great strength of this product is that it is able to control all the pool cover motors on the market. It is the only universal control box available.

An RS485 bus is available for expansion or for an additional custom board.

UNIBox is CE, UKCA and UL approved.

Technical specifications

- Power supply 230V AC - 50/60 Hz
- Motor output : 30V DC empty, 24V DC under load
- Overcurrent protection by fuse
- Overvoltage protection by varistors
- Operating Temperature : 0°C à +50°C
- Storage Temperature: 0°C à +85°C
- IP50 Waterproofing
- Cable glands included
- On/off button for power up

	UNIBox 120	UNIBox 250	UNIBox 450
Weight	2.2 kg	4.8 kg	6.5 kg
Dimensions	250x175x76	300x300x135	300x300x135
Power	120VA	250VA	450VA



UNIBox 120



UNIBox 250/450

Advanced functions

- Impulse and / or maintained control in both directions (configurable)
- Safety loop (for water level sensor, emergency stop...)
- Programmable soft start (speed ramp)
- Soft docking at the end of closing
- Anti-snatching of the cover in case you forget to unlock the cover
- Auxiliary relay (electrolyser, filtration pump...)
- Amperometric control during the entire opening and closing process to stop the motor from forcing onto any obstacle in the pool
- Manual mode to force the motor to function
- 8-segment LED display for easy diagnosis
- Reinforced overtension protection

UNIBox 250 and 450 specific functions

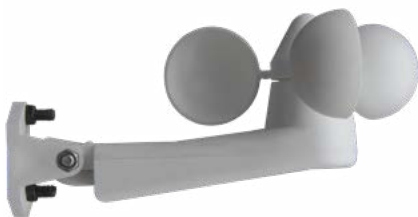
- Controls all sensor technologies - universal control box
- Closing speed control
- Second auxiliary port providing information about the motor's condition to control the filtration pump
- Entry to plug in a storm sensor to protect the cover
- RS485 bus

Accessories

• Wind sensor

The wind sensor allows the cover to be protected in case of bad weather.

In case of strong winds, the sensor can send a signal to the board, which will cause the opening of the pool to prevent the cover from being torn off.



• Plugin radio receiver board



Associated motors

	PL series	DL series
UNIBox 120	1210 / 2010	1310
UNIBox 250	3210 / 1218	3010 / 1318 / UNISub 300
UNIBox 450	6010 / 7710 / 2018 / 3218 / 605	6010 / 7710 / 3018 / 605

UNIMot



Features & Benefits

- Mechanical limit switch adjustment
- External electronic board for easy maintenance of the motor
- Static holding brake to maintain the cover in position when stopped - CPS patent
- Front and back adapter flanges made of solid PVC manufactured according to customer tube dimensions
- Reinforced output shaft made of steel, with black oxide treatment
- IP45 / IP55 waterproofing, suitable for above-ground pool covers
- Suitable for post-mounted pool covers, up to 300Kg weight
- 220 V AC mains - 24V supply or 12V low voltage (photovoltaic compatible) - IP55 tightness

TUBULAR ABOVE GROUND



Technical data

		UNIMot		
Output torque	Nm	120	80	35
Rotation speed (under load)	Rpm	4	3	14
Rated current	A	5	7	5
Supply voltage	V DC	24	12	24
Solar panel powered compatible	-	•	•	•
Waterproofing: IP55	-	•	•	•
Constant Positioning System	CPS	•	•	•

Mechanical limit switch adjustment

- UNIMot offers an electromechanical limit switch system that stops the power supply to the motor when the cover has reached the closed or open position. These limit switches are adjusted by screws located on the motor head.

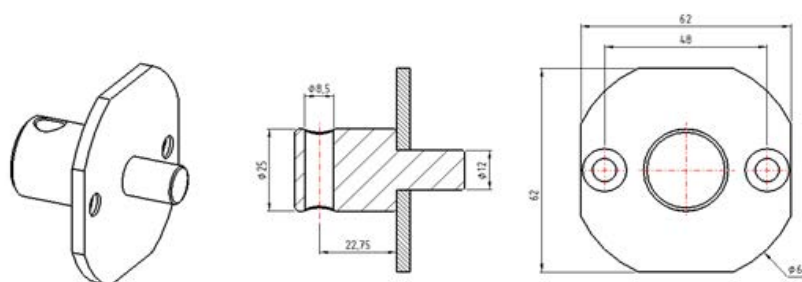


Gearmotor dimensional drawing

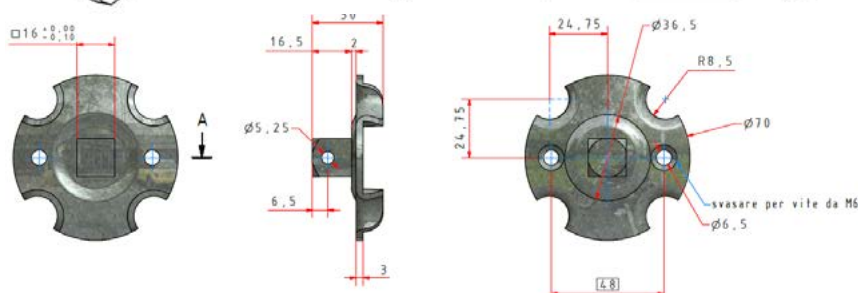


Head support dimensions

- Round head support plate
 - 25mm diameter
 - 30mm diameter



- Square head support plate
- 16mm² shaft



Patents & Features



UNIMot electronic controllers

Overview

The UNIMot range of external electronic boards is designed for above ground installations and is capable of managing 12V and 24V motorizations in a simple, economical and complete way.

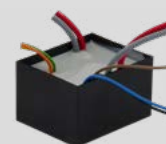
This range is composed of 3 products, adapting to the installation constraints of each pool. They are suitable for all types of above-ground pool cover installations.

Product range

The **UNIMot Premium Box 150VA** is an all-in-one electronic board, equipped with a 220/24V AC/DC converter and the same functions as the UNIMot Controller board. It is the only controller for UNIMot that enables the user to choose between a pulse mode or a man-present mode. It has to be installed in the pool house.



The **UNIMot Controller light 24V** is the simplest card, which is best suited for installation inside the post, without having to be in a technical room. This board is completely resined (IP68).



The **UNIMot Controller 12/24V AUX** can also be installed in the post thanks to its small size. In addition to this, it allows connection to an electrolyser to ensure better integration with external devices, thanks to its two auxiliary outputs. This board is completely resined (IP68).

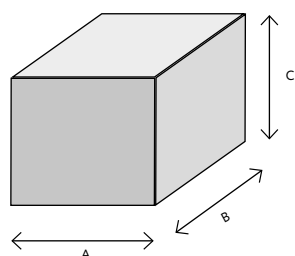


Power feeding

The **150VA AC/DC Converter** allows the UNIMot Controller light 24V and the UNIMot Controller 12/24V AUX to be supplied with 24V DC from a technical room.



Size of the controllers



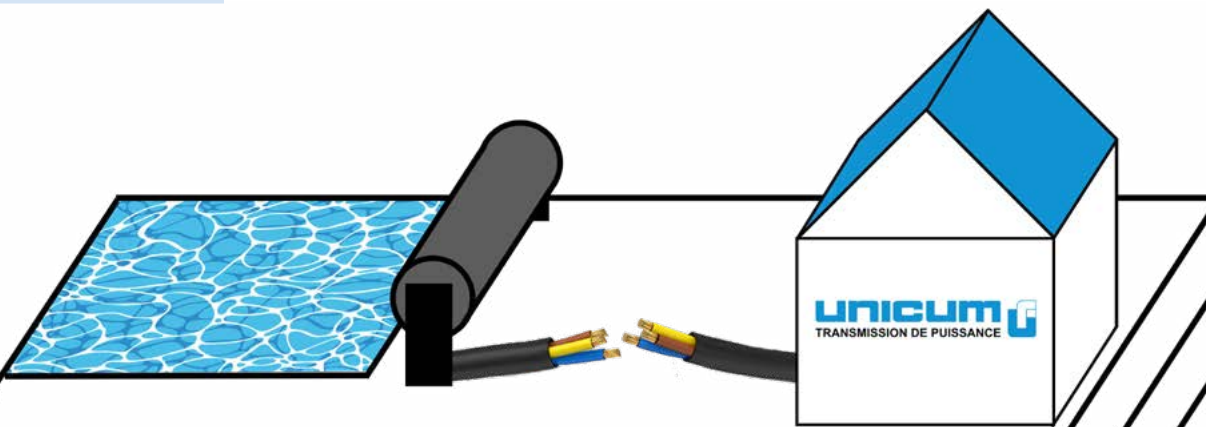
	A	B	C
UNIMot Controller Light 24V	40mm	50mm	30mm
UNIMot Controller 12/24V AUX	77mm	77mm	38.3mm
150VA AC/DC Converter	173mm	250mm	100mm
UNIMot Premium Box 150VA	173mm	250mm	100mm

BOÎTIERS
ÉLECTRIQUES

Product functions

	UNICUM CODE	MOTOR CONTROL IN BOTH DIRECTIONS	KEY SWITCH CONNECTION	TWO AUXILIARY CONTACTS	AC/DC CONVERSION	MAN-PRESENT AND PULSE MODE	CABLES BETWEEN THE COVER AND THE TECHNICAL ROOM
UNIMot Controller Light 24V	U6228300	X	X				0 ou 2
UNIMot Controller 12/24V AUX	U6228297	X	X	X			0 ou 5
150VA AC/DC Converter	U6228296				X		2
UNIMot Premium Box 150VA	U6228211	X	X	X	X	X	5

Installation options



Installation type	Pole	Wiring	Equipment room
Solar inside pole	Solar panel, battery UNIMot Controller Light 24V U6228300		
In pole/equipment room	UNIMot Controller Light 24V U6228300	2 wires	150VA AC/DC Converter U6228296
In pole/equipment room	UNIMot Controller 12/24V AUX U6228297	5 wires	150VA AC/DC Converter U6228296
Equipment room (mains)		5 wires	UNIMot Premium Box 150VA U6228211

UNIMot Elec



Features & Benefits

- Electronic setting of limit switches
- Very precise Hall effect position sensor
- Very silent in operation
- Electromagnetic brake to maintain the cover in position when motor stops
- PVC front and rear flanges fitting customer's tube dimensions
- Tubular housing made of nickel-plated steel and output shaft made of 316L stainless steel
- IP45 / IP55 waterproof fitting
- Multiple output torque choices depending on power feed controller type (see table below)
- 24V DC powered via 220VAC / 24V DC converter, Réf. UNIBox

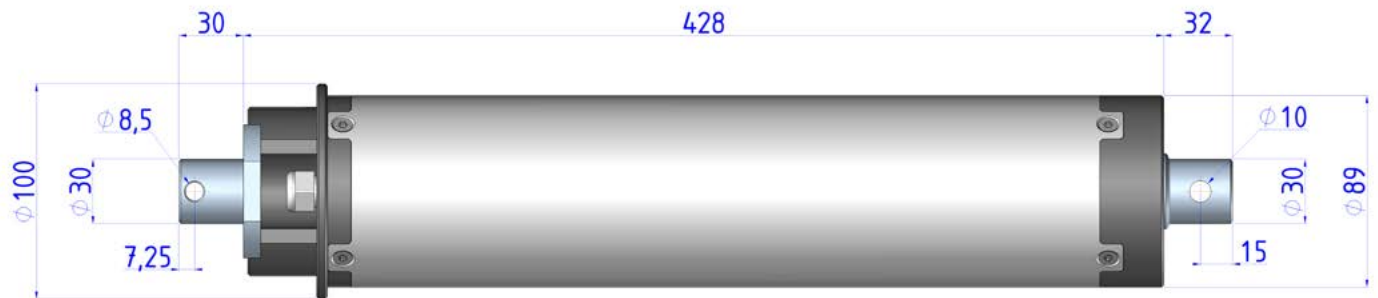
TUBULAR
ABOVE-
GROUND



Patents & Features

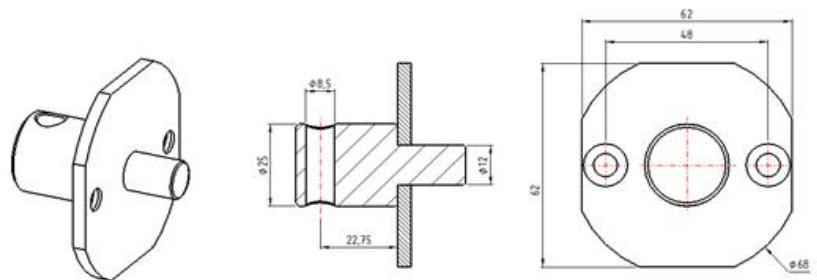
IP55

Gearmotor dimensional drawing



Head motor support dimension

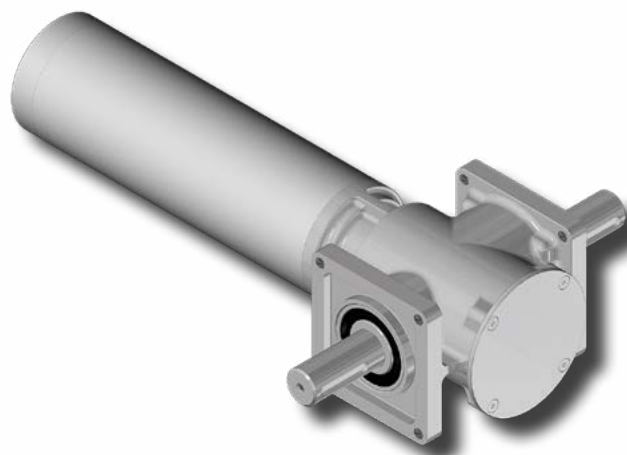
- Round shaped head motor support
- Diameter : 30mm



Technical data

		UNIMot Elec	
Output torque	<i>Nm</i>	120	200
Rotation speed (under load)	<i>tr/mn</i>	4	4
Rated current	<i>A</i>	4	6
Supply voltage	<i>V DC</i>	24	24
Control box Ref.	<i>UNIBox 120</i>	●	
Control box Ref.	<i>UNIBox 250</i>		●
Waterproof: IP55		●	●

Submerged DL series



Features & Benefits

- 100% waterproof stainless steel + PVC housing (internal pressure 1.8 bar N2)
- Output shaft made of 316L stainless steel
- IP68 watertight for underwater operation
- Electromagnetic holding brake to maintain the cover in position when stopped
- Mechanical limit switches, insensitive to overtension - MLS patent
- Inductive or Hall position sensor available on demand

Power Supply

- Automatic control panel, with limit switch setting and other enhanced functions for cover management: UNIBox controllers (see specific page)
- Conversion from 230V AC to 24V DC - CE, UKCA and UL certification
- All motorgearbox technical data must be intended as valid only when the motor is powered with the recommended UNIBox controller

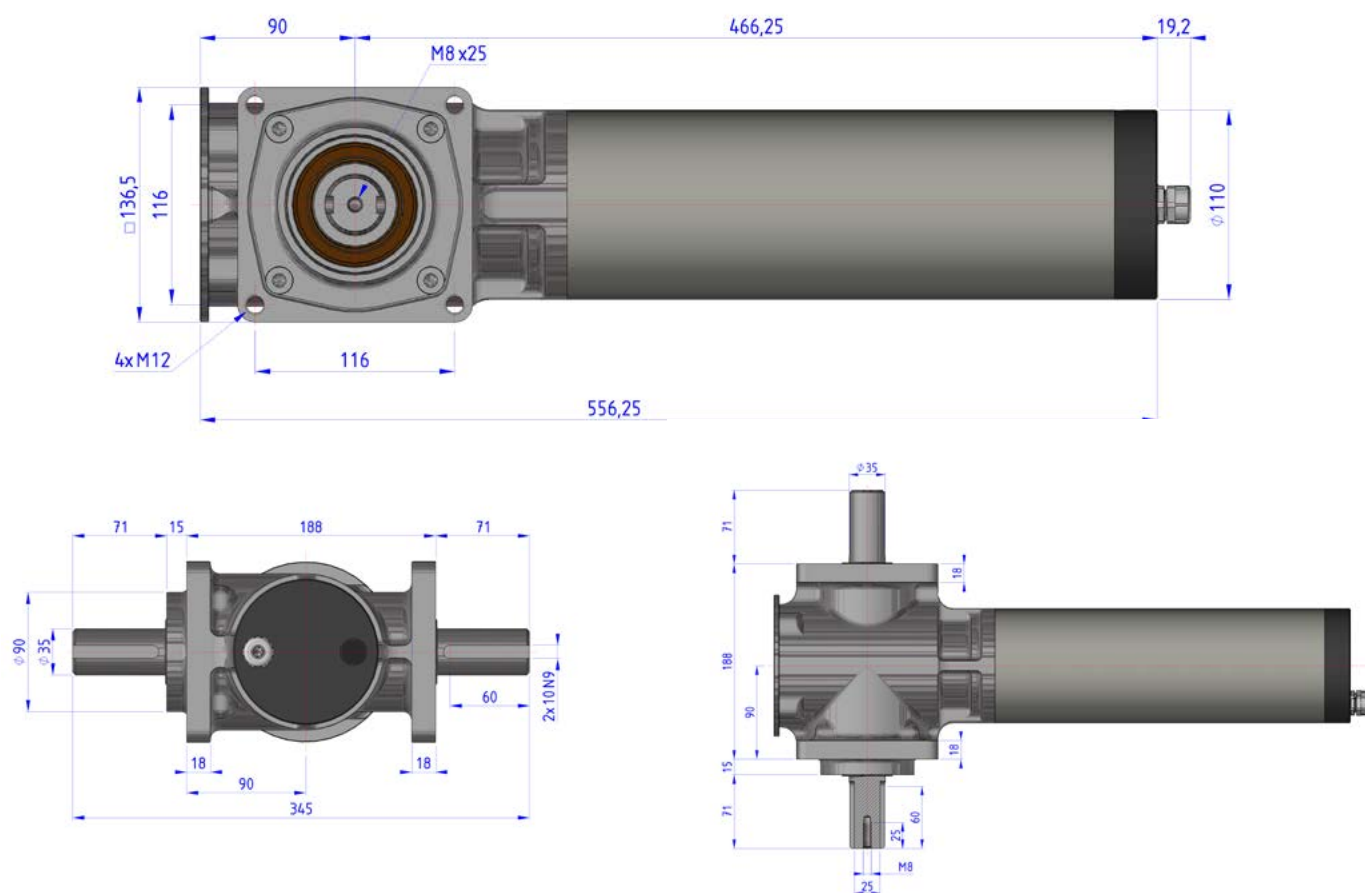
CUBIC
SOLID
SHAFT
IP68



Patents & Features



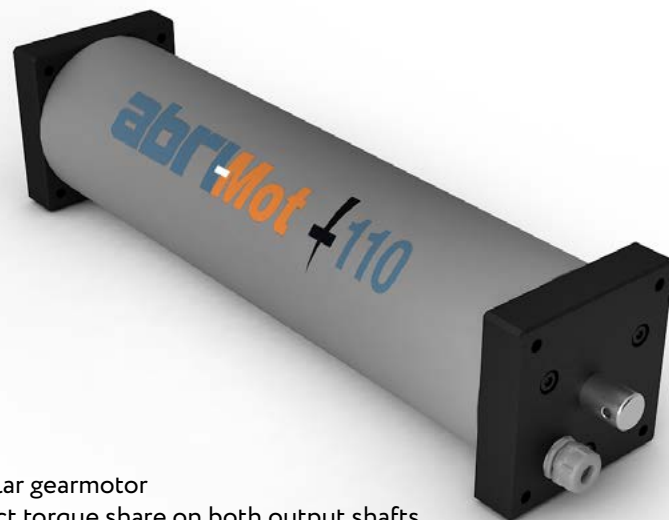
Dimensional drawing



Technical data

		Submerged DL
Output torque	Nm	900
Rotation speed (under load)	Rpm	2
Rated current	A	15
Supply voltage	V DC	24
Power supply Ref.	UNIBox 450	●
Waterproofing: IP68 during operation	-	●
Mechanical Limit Switch	MLS	●

ABRIMot



Features & Benefits

- Patented design based on a tubular gearmotor with two coaxial outputs for a perfect torque share on both output shafts
- Compact and specially designed for embedded applications; two flange sizes are available: 66 and 110 mm
- Many reduction ratios available for each size, to fit the most different kinematics
- PVC housing, shaft made of 316L stainless steel
- Optional position sensor to program limit switches electronically
- Standard cable 1.5m
- IP55 Waterproofing

Power Supply

- 220 V AC mains - 24V or 12V low voltage supply (photovoltaic compatible)
- IP55 control board (rotation direction and limit switches management)
- Remote control supplied as standard

TUBULAR
DOUBLE
SIDED



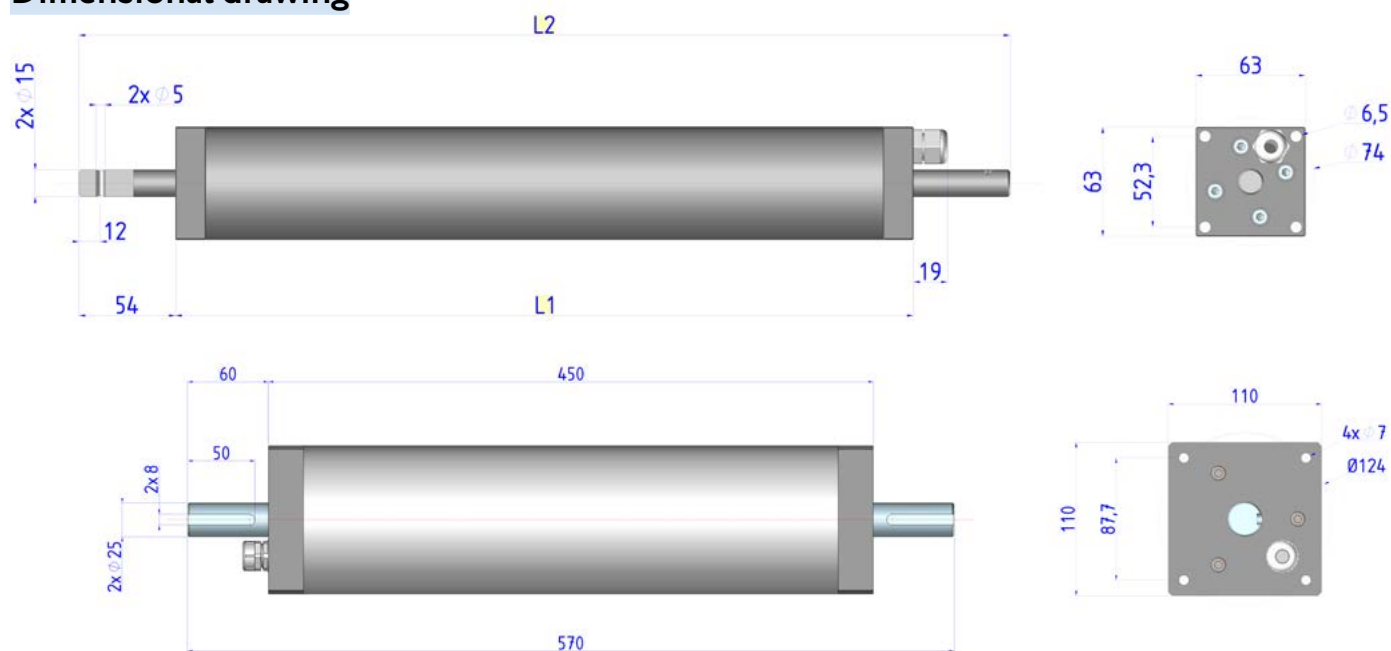
Patents & Features



Ancillary equipments

- Installation mechanical kit (couplings, wheels, etc.)
- Conversion board 220V AC / 24VDC
- Solar panel lead battery 12V - 7,2 Ah - or more
- Charger regulator
- 12W (or more) solar panel
- Solar panel in special versions:
 - high efficiency or
 - anti-skid or
 - with mimetic aspect or
 - with integrated charge regulator
- Battery charger from mains

Dimensional drawing



Technical data

ABRIMot 110					
24V					
		Current 5A		Current 10 A	
		Torque	Speed	Torque	Speed
		Nm	Rpm	Nm	Rpm
Ratio	1/63	18	49.5	33	41
	1/104	30	30	55	25
	1/205	59	15	105	12.5
	1/339	98	9	180	7.5
	1/646	185	4.5	340	4

All values are given for information only

ABRIMot 66											
24V						12V					
		Current 5A		Current 10 A		Current 5A		Current 10A		Current 15A	
		Torque	Speed	Torque	Speed	Torque	Speed	Torque	Speed	Torque	Speed
		Nm	Rpm	Nm	Rpm	Nm	Rpm	Nm	Rpm	Nm	Rpm
Ratio	1/168	20	31.5	40	27	10	31	22	27	34	22.5
	1/234	26	23	54	20	12	22	26	20	40	16
	1/326	36	16.5	72	14	17	16	42	13.5	60	11

Home automation

Overview

UNICUM's domotics portfolio consists in a range of components allowing the user to build their own solution to control the cover remotely. This ecosystem is based on two receivers: one radio receiver with its remote and a second receiver communicating both via radio and Bluetooth. Those who want to control the pool cover through their smartphone will use the combined radio-Bluetooth receiver together with a UNICUM free App on their smartphone.

These receivers can be installed near the motor control panel and acting in parallel with the key switch.

This domotics set can therefore be used with any current UNICUM enclosure, but also with all previous versions and all motorized pool cover equipped with UNICUM motors.

With proper installation of the adapter and by limitation of the Bluetooth power (from the smartphone application), the compliance with NF P90-308 can be fully ensured.

Radio receiver 433.92 Mhz

It's a two channels receiver that can be powered with 12V or 24V DC and must be installed near gearmotor controller board. Wiring is done with three wires that can be connected in parallel with the key switch.



Technical data:

- Powered by 12V/24V DC
- Enclosure IP55
- Transmitting frequency: 433.92 Mhz
- Encrypted communication protocole
- Max. Nb of paired devices : 1000
- Working temperature T°: -10° to + 50°C
- Dimensions: 95x75x25 mm

Remote control*

This is a two channels hand remote transmitter which can be optionally completed by a wall support were it can be clipped to.



Technical data:

- Powered by 3V DC
- Lithium batteries
- Protection level : IP20
- Transmitting frequency: 433.92 Mhz
- Dimensions : 80x34x11

***Each remote control works only with its own related radio receiver 443.92 Mhz or 868 Mhz**

DOMOTICS

Radio receiver 868 Mhz with built in Bluetooth



Technical data:

- Powered by 12/24V DC
- Enclosure IP54
- Transmitting frequency: 868 Mhz and Bluetooth
- Encrypted communication protocol
- Max. Nb of paired devices: 42
- Working temperature T°: 0° to + 50°C
- Dimensions: 118x52x25 mm

This solution is more expansive than a pure radio receiver because it has an additional Bluetooth receiver built in.

Remote control*

This is a two channels hand remote transmitter which is equipped of a wall support were it can be clipped to.

Technical data:

- Powered by: 3V
- Lithium batteries
- Waterproof: IP20
- Transmitting frequency: 868 Mhz and Bluetooth
- Dimensions : 60x30x10 mm



By connecting via Bluetooth to the receiver and if you have the free UNICUM app (Android or IOS), you can easily control your pool cover from your smartphone.

The smartphone application lets you configure the security code and the power of the Bluetooth source. The box can be physically installed close to the shutter box (ex: in the post of an above-ground shutter). The operator will be able to reduce the Bluetooth range to a minimum and thus obtain an installation that complies with the NFP standard.

App for Smartphone

Entering a security code to access the controls (1) is mandatory when anyone is looking to use an automated system to open and close a pool cover.

When the user is asking to close the pool, they have to confirm being near enough to the basin to check that no one is still in the water. Confirming that this is the case is then the only way to go ahead with the basin closing procedure (2).

On the settings and adjustments page, it is possible to modify the power emitted by the Bluetooth, especially to reduce its emission level in the case of an above-ground application with the receiver enclosure mounted in the pool cover post. Following this procedure (and if the installation is correct in regards to the other standards) the pool cover system will fully comply with the NF P30-308 standard (3).





unicum 
PUISSANCE | EXIGEANCE | PERFORMANCE

ZI de Montrambert Pigeot, 42150 La Ricamarie
+33 4 77 33 36 96 | contact@unicum.tech | www.unicum.tech