

DOMOTICS

Home automation

UNICUM's domotics portfolio consists in a range of components allowing the user to build their own solution to control the cover remotely.

This ecosystem is based on two receivers: one radio receiver with its remote and a second receiver communicating both via radio and Bluetooth. Those who want to control the pool cover through their smartphone will use the combined radio-Bluetooth receiver together with a UNICUM free App on their smartphone.

These receivers can be installed near the motor control panel and acting in parallel with the key switch.

This domotics set can therefore be used with any current UNICUM enclosure, but also with all previous versions and all motorized pool cover equipped with UNICUM motors.

With proper installation of the adapter and by limitation of the Bluetooth power (from the smartphone application), the compliance with NF P90-308 can be fully ensured.

▶ Radio receiver 433.92 Mhz

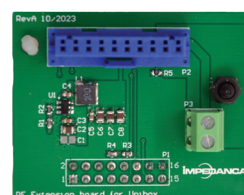
It's a two channels receiver that can be powered with 12V or 24V DC and must be installed near gearmotor controller board. Wiring is done with three wires that can be connected in parallel with the key switch.



Technical data:

- Powered by 12V/24V DC
- Enclosure IP55
- Transmitting frequency: 433.92 Mhz
- Encrypted communication protocole
- Max. Nb of paired devices : 1000
- Working temperature T°: -10° to + 50°C
- Dimensions: 95x75x25 mm

▶ Plugin radio receiver board UNIbox



▶ Remote control

This is a two channels hand remote transmitter which can be optionally completed by a wall support were it can be clipped to.



Technical data:

- Powered by 3V DC
- Lithium batteries
- Protection level : IP20
- Transmitting frequency: 433.92 Mhz
- Dimensions : 80x34x11

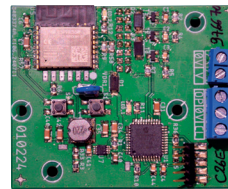
▶ Universal Bluetooth receiver



Technical data:

- Powered by 12/24V DC
- Enclosure IP54
- Transmitting frequency: 2,4 Ghz and Bluetooth
- Encrypted communication protocol
- Max. Nb of paired devices: 8
- Working temperature T°: 0° to + 50°C
- Dimensions: 130x70x50 mm

▶ Bluetooth receiver board UNIbox



▶ Remote control

4 channels IP68 hand remote control



Technical data:

- Powered by: 3V
- Lithium batteries
- Waterproof: IP68
- Transmitting frequency: 2,4 Ghz and Bluetooth
- Dimensions : 90x50x25 mm

Uni Pool Easy Control App for Smartphone

By connecting via Bluetooth to the receiver and if you have the free UNICUM app (Android or IOS), you can easily control your pool cover from your smartphone.

The smartphone application lets you configure the security code and the power of the Bluetooth source. The box can be physically installed close to the shutter box (ex: in the post of an above-ground shutter). The operator will be able to reduce the Bluetooth range to a minimum and thus obtain an installation that complies with the NFP standard.

- 1 Entering a security code to access the controls is mandatory when anyone is looking to use an automated system to open and close a pool cover.
- 2 When the user is asking to close the pool, they have to confirm being near enough to the basin to check that no one is still in the water. Confirming that this is the case is then the only way to go ahead with the basin closing procedure.
- 3 On the settings and adjustments page, it is possible to modify the power emitted by the Bluetooth, especially to reduce its emission level in the case of an above-ground application with the receiver enclosure mounted in the pool cover post. Following this procedure (and if the installation is correct in regards to the other standards) the pool cover system will fully comply with the NF P30-308 standard.

