

## TUBULAR ABOVE- GROUND

### APPLICATIONS



## UNIMot Elec



### Features & Benefits

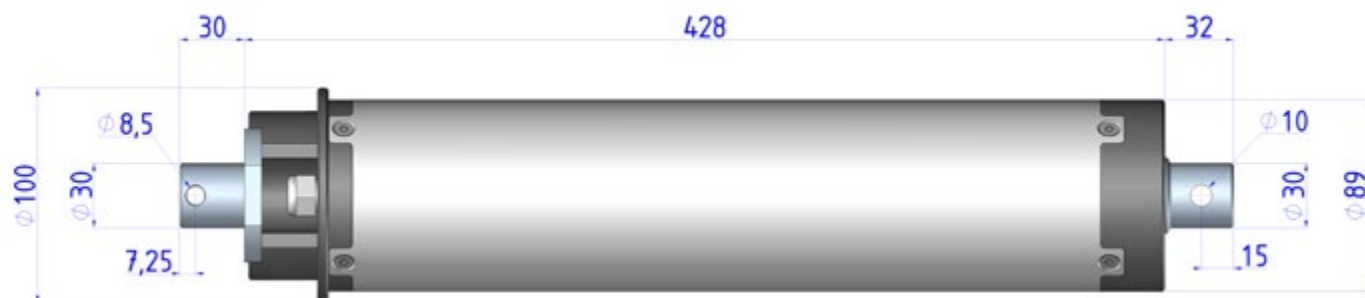
- Electronic setting of limit switches
- Very precise Hall effect position sensor
- Very silent in operation
- Electromagnetic brake to maintain the cover in position when motor stops
- PVC front and rear flanges fitting customer's tube dimensions
- Tubular housing made of nickel-plated steel and output shaft made of 316L stainless steel
- IP45 / IP55 waterproof fitting
- Multiple output torque choices depending on power feed controller type (see table below)
- 24V DC powered via 220VAC / 24V DC converter, Réf. UNIBox



### Patents & Features

IP55

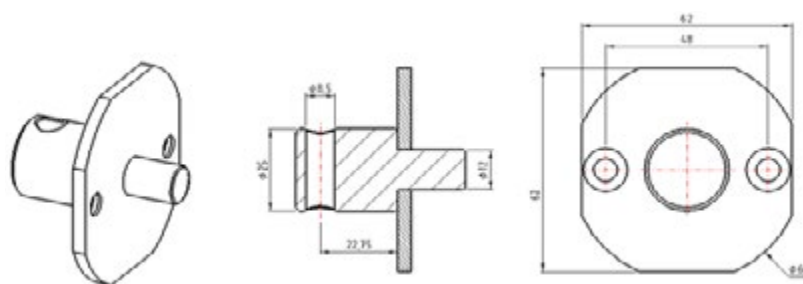
## Gearmotor dimensional drawing



## Head motor support dimension

### ► Round shaped head motor support

Diameter : 30mm



## Technical data

		UNIMot Elec
Output torque	Nm	200
Rotation speed (under load)	tr/mn	4
Rated current	A	6
Supply voltage	V DC	24
Control box Ref.	UNIBox 150 LT	●
Waterproof: IP55		●