

TUBULAR ABOVE GROUND

APPLICATIONS



UNIMot



Features & Benefits

- Mechanical limit switch adjustment
- External electronic board for easy maintenance of the motor
- Static holding brake to maintain the cover in position when stopped - CPS patent
- Front and back adapter flanges made of solid PVC manufactured according to customer tube dimensions
- Reinforced output shaft made of steel, with black oxide treatment
- IP45 / IP55 waterproofing, suitable for above-ground pool covers
- Suitable for post-mounted pool covers, up to 300Kg weight
- 220 V AC mains - 24V supply or 12V low voltage (photovoltaic compatible) - IP55 tightness



Technical data

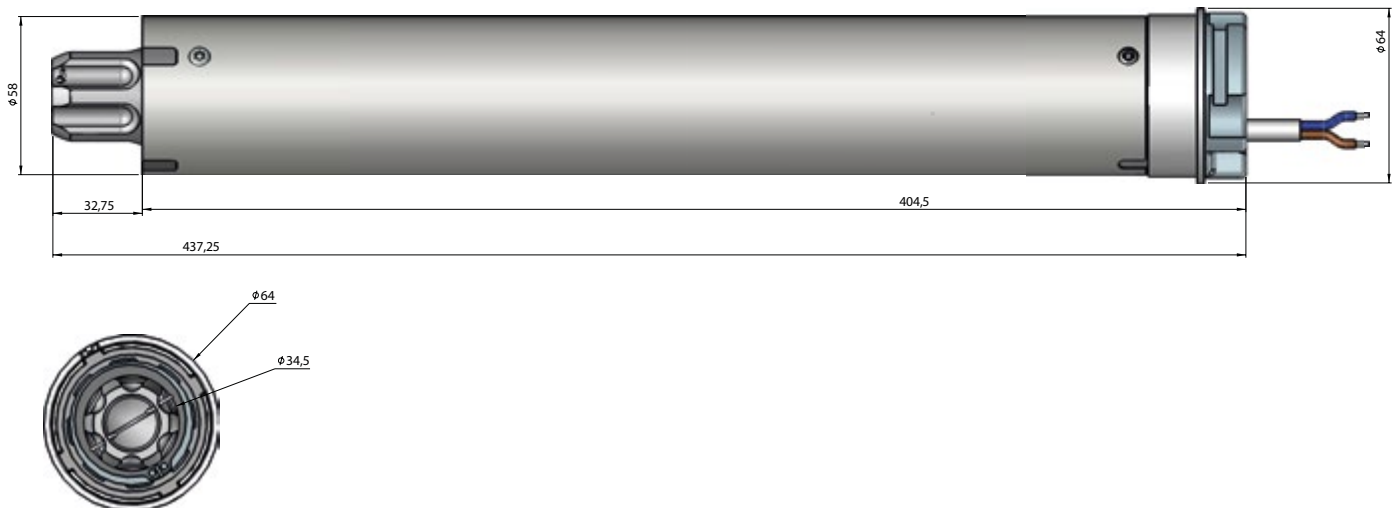
		UNIMot		
Output torque	Nm	120	80	35
Rotation speed (under load)	tr/mn	4	3	14
Rated current	A	5	7	5
Supply voltage	V DC	24	12	24
Solar panel powered compatible	-	●	●	●
Waterproofing: IP55	-	●	●	●
Constant Positioning System	CPS	●	●	●

Mechanical limit switch adjustment

UNIMot offers an electromechanical limit switch system that stops the power supply to the motor when the cover has reached the closed or open position. These limit switches are adjusted by screws located on the motor head.



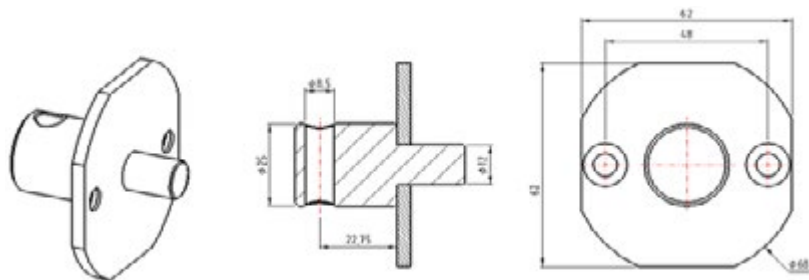
Gearmotor dimensional drawing



Head support dimensions

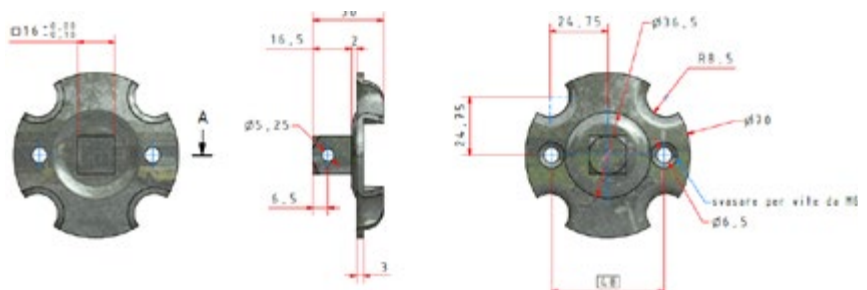
► **Round head support plate**

- 25mm diameter
- 30mm diameter



► **Square head support plate**

- 16mm² shaft



Patents & Features



CONTROLLERS FOR UNIMOT

UNIMot electronic controllers

Overview

The UNIMot range of external electronic boards is designed for above ground installations and is capable of managing 12V and 24V motorizations in a simple, economical and complete way.

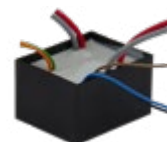
This range is composed of 3 products, adapting to the installation constraints of each pool. They are suitable for all types of above-ground pool cover installations.

Product range

The **UNIMot Premium Box 150VA** is an all-in-one electronic board, equipped with a 220/24V AC/DC converter and the same functions as the UNIMot Controller board. It is the only controller for UNIMot that enables the user to choose between a pulse mode or a man-present mode. It has to be installed in the pool house.



The **UNIMot Controller light 24V** is the simplest card, which is best suited for installation inside the post, without having to be in a technical room. This board is completely resined (IP68).



The **UNIMot Controller 12/24V AUX** can also be installed in the post thanks to its small size. In addition to this, it allows connection to an electrolyser to ensure better integration with external devices, thanks to its two auxiliary outputs. This board is completely resined (IP68).

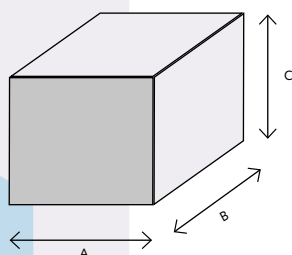


Power feeding

The **150VA AC/DC Converter** allows the UNIMot Controller light 24V and the UNIMot Controller 12/24V AUX to be supplied with 24V DC from a technical room.



Size of the controllers

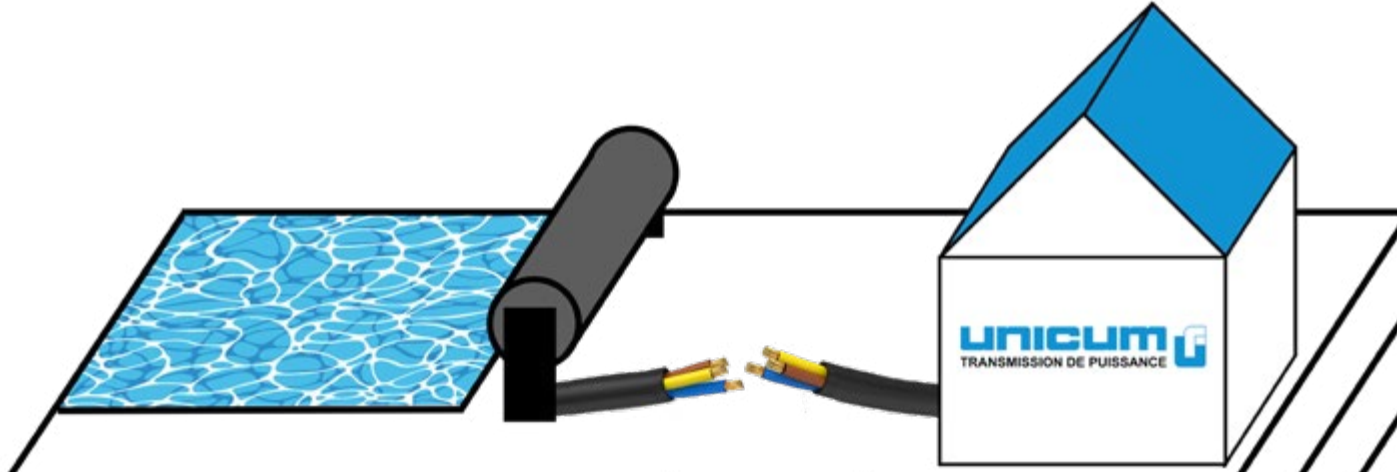


	A	B	C
UNIMot Controller Light 24V	40mm	50mm	30mm
UNIMot Controller 12/24V AUX	77mm	77mm	38.3mm
150VA AC/DC Converter	173mm	250mm	100mm
UNIMot Premium Box 150VA	173mm	250mm	100mm

Product functions

	UNICUM CODE	Motor control in Both directions	Key switch connection	Two auxiliary contacts	Ac/dc conversion	Man-present and pulse mode	Cables between the cover and the technical room
UNIMot Controller Light 24V	U6228300	X	X				0 or 2
UNIMot Controller 12/24V AUX	U6228297	X	X	X			0 or 5
Convertisseur AC/DC 150VA	U6228296				X		2
UNIMot Premium Box 150VA	U6228211	X	X	X	X	X	5

Installation options



Installation type	Pole	Wiring	Equipment room
Solar inside pole	Solar panel, battery UNIMot Controller Light 24V U6228300		
In pole/equipment room	UNIMot Controller Light 24V U6228300	2 wires	150VA AC/DC Converter U6228296
In pole/equipment room	UNIMot Controller 12/24V AUX U6228297	5 wires	150VA AC/DC Converter U6228296
Equipment room (mains)		5 wires	UNIMot Premium Box 150VA U6228211